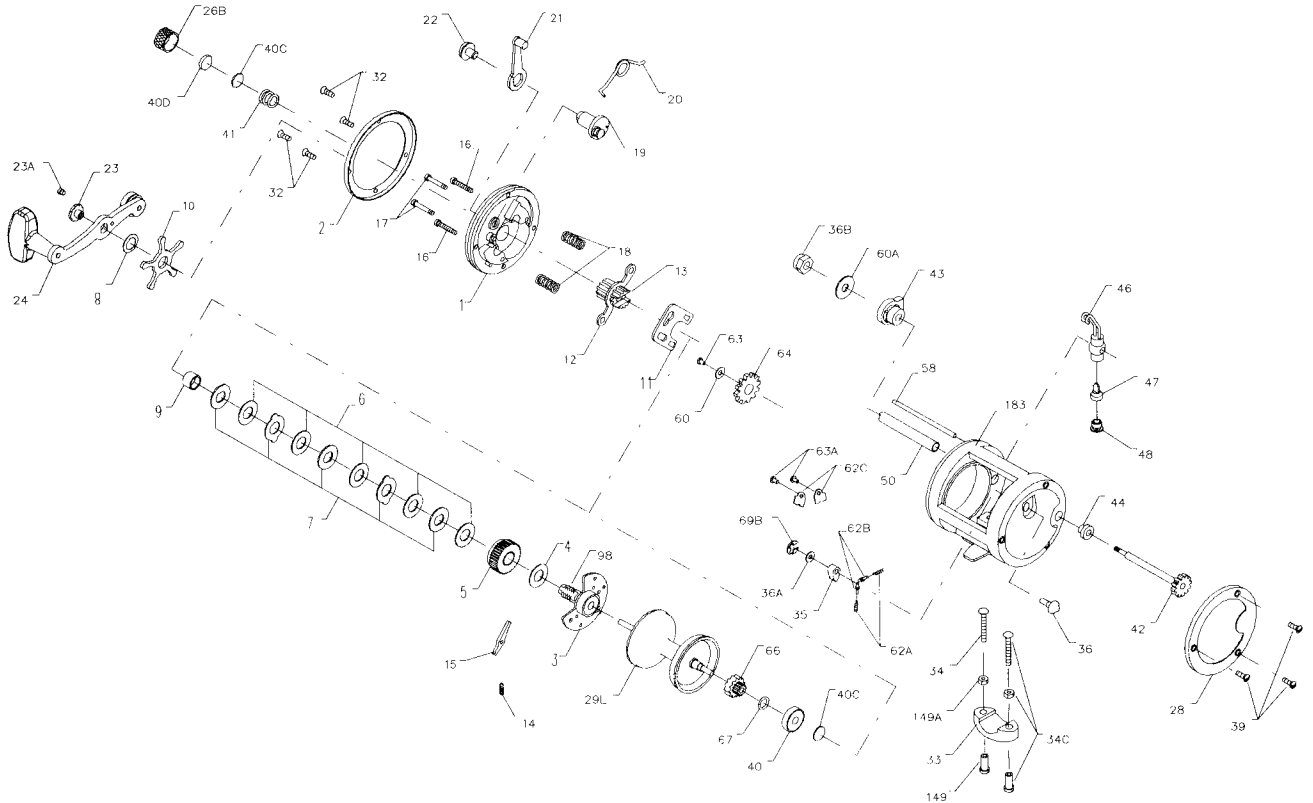




PARTS AND PRICE LIST FOR MODEL 321GTi-LH



Key No.	Part No.	Description	Price	Key No.	Part No.	Description	Price
1	001 321LH	Side Plate	\$5.75	34C	034C045	Clamp Screw w/Nuts	\$2.50
2	002 321LH	Side Ring	5.65	35	035 320	Click Tongue	1.25
3	003 321LH	Bridge Assembly	18.00	36	036 320	Click Button	1.10
4	004 349	Fiber Washer	.45	36A	036A040	Click Button Washer	.40
5	005 321LH	Main Gear	6.90	36B	036 700	Worm Shaft Nut	.90
6	006 320	Friction Drag Washer (5 req.)	1.10	39	110 050	Frame Screw (3 req.)	.50
7	007C970	Metal Drag Washer (Set of 5)	4.50	40	040 320	Ball Bearing	7.50
8	008 349	Tension Spring	.90	40C	040C320	Metal Thrust Washer (2 req.)	.40
9	009 320	Spacing Sleeve	1.90	40D	040D320	Rubber Thrust Washer	.40
10	010 321LH	Star Drag	4.40	41	041 330	Right Side Thrust Spring	.45
11	011 321LH	Eccentric Jack	1.30	42	042 320N	Worm	5.00
12	012 155	Pinion Yoke	.90	43	043 330	Right Side Worm Bearing	1.00
13	013 321LH	Pinion Gear	3.50	44	044 330	Left Side Worm Bearing	1.00
14	014 330	Dog Spring	.50	46	046 320N	Line Guide Carriage	4.45
15	015 320	Dog	1.00	47	047 320	Pawl	1.35
16	016 113H	Lower Bridge Screw (2 req.)	.50	48	048 330N	Pawl Cover Screw	.95
17	017 113H	Upper Bridge Screw (2 req.)	.50	50	050N320	Worm Shield	1.90
18	018 060	Clutch Spring (2 req.)	.45	58	058 320	Line Guide Post	1.70
19	019 321LH	Eccentric Cam	2.25	60	060 320	Idler Gear Washer	.40
20	020 321LH	Eccentric Spring	.55	60A	060 320	Idler Gear Washer	.40
21	021 285	Eccentric Lever Assembly	1.60	62A	062A310	Click Spring (2 req.)	.45
22	022 060CH	Eccentric Screw	.55	62B	062B310	Click Pin	.65
23	023 114	Handle Assembly Screw	2.65	62C	062C321LH	Click Spring Cover	.75
23A	110 060	Handle Lock Screw	.45	63	063 500S	Idler Gear Screw	.80
24	024 320	Handle Assembly	8.50	63A	063 500S	Click Spring Screw (2 req.)	.80
26B	026B320	Spool Tension Control Cap	1.75	64	064 320	Idler Gear	1.30
28	028 321LH	L.S. Ring	5.95	66	066 320	Spool Gear Click Ratchet	1.60
29L	029L320	Aluminum Spool	14.70	67	067 009	Spool Gear Lock Ring	.40
32	032 017	Side Plate Screw (4 req.)	.40	69B	069B600	Retaining Ring (Click Button)	.90
33	033 113	Rod Clamp	4.00	98	098 321LH	Gear Sleeve	5.50
*	*033R200	Ringed Rod Clamp (Optional)	6.25	149	149 045	Clamp Nut Only	1.00
34	034 045	Clamp Screw	1.00	149A	149 200	Hex Nut Only	.50
				183	183 321LH	Frame	25.70